



# Post Driver – BMPD-H80



This User Manual covers the Bullmax Post Driver Component.  
Refer to the Honda User Manual for safe operation of the Honda GX50 engine.

---

# User Manual

Thank you for purchasing the Bullmax Post Driver. This machine is powered by the (Honda GX50) 4 stroke engine that is easy to use and very reliable. Please read these user instructions carefully as when followed will ensure efficient and a long working service life of the machine.

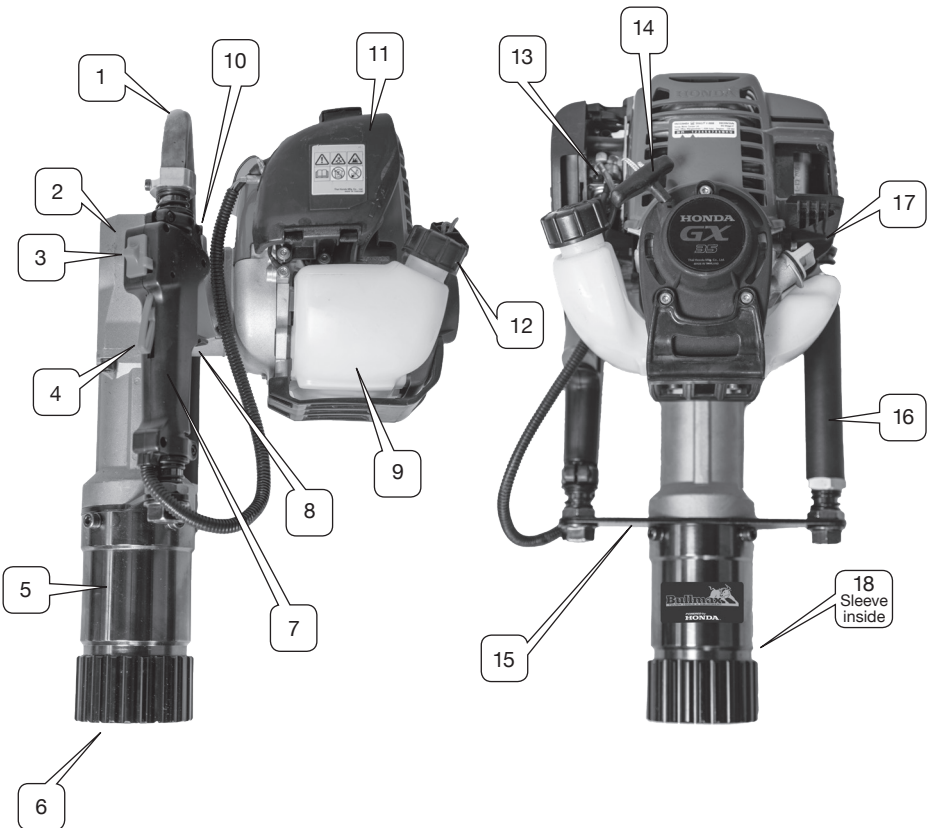
It is important to follow the user manual instructions before using this machine for your safety and to avoid physical injury and damage.

## Contents

1. Parts Diagram .....	3
2. Safe Operating Instructions .....	4
3. Main Purpose and Function .....	4
4. Preparation before use .....	5
5. Starting .....	5
6. Operation .....	5
7. Turning off the Machine .....	6
8. Technical Maintenance .....	6
9. Failure Analysis and Troubleshooting .....	6
10. Honda GX50 Engine Specifications .....	6
11. Bullmax Post Driver Parts – Maintenance Cycle .....	7
12. Honda GX50 Engine – Maintenance Cycle .....	7
13. Parts List and Exploded View of BMPD-H80 Post Driver .....	8–10
14. Bullmax Post Driver Packing List .....	11
15. Bullmax Post Driver Warranty .....	12

# 1. List of Main Parts

No.	Name of Part	No.	Name of Part	No.	Name of Part
1	Handle	2	Gear Box	3	Ignition ON/OFF Switch
4	Combination Switch with Throttle Control	5	Piling Socket	6	Piling Sleeve Retainer
7	Handle	8	Gear Box Cover	9	Fuel Tank
10	Adjust Button	11	Air Filter	12	Fuel Tank Lid
13	Fuel Bubble	14	Starter	15	Support Plate
16	Handle	17	Oil Filler	18	55mm or 75mm Piling Socket Sleeve



## **2. Safe Operating Instructions**

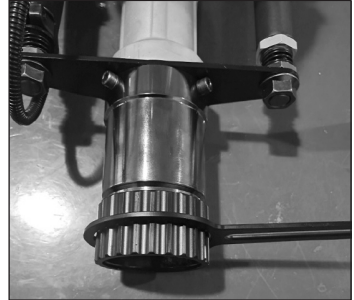
1. The operator must wear slip-resistant safety shoes, suitable clothing, safety glasses, helmet, and earplugs.
2. While operating the machine, please keep well balanced; the user shall stand with engine facing away to operate the machine. While operating the machine, do not partake in any other activity.
3. While operating the machine always use both hands.
4. When lifting the machine always have engine at idle.
5. Keep any observer away from the operation area to avoid injury.
6. Select the medium speed to operate post driver.
7. Keep the handle dry and clean free of oil or fuel.
8. If operation is stopped midway; be sure to turn off the engine.
9. Pre-check before use that all bolts and screws are tight and that they have not vibrated loose from the previous day's work or transportation.
10. Gasoline is highly flammable. Therefore, replenish fuel in a well-ventilated environment. During fuel filling, engine must be turned off.
11. Do not add too much fuel and do not exceed the neck of the fuel tank. If fuel spills, wait until the fuel vaporizes completely and then start the engine.
12. After refueling, tighten the fuel tank lid. If fuel spills while operating the machine, check that the fuel tank lid is tight and check for damage to the fuel tank. If there is a fuel leak shut the machine down immediately.
13. Keep reserve fuel in a safe storage area away from fire or open flame.
14. Where the post driver is used in closed areas such as tunnels, trenches and confined spaces, ensure there is ample air circulation to avoid waste gas poisoning and suffocation.
15. When transporting ensure machine is tied down securely so as to not damage the machine.
16. Before transport, empty fuel inside fuel tank to avoid leakage.
17. Do not allow non-qualified personnel to dismantle the post driver. This will avoid internal damage of the machine, shortened service life of the post driver or accidents. To do so will void the warranty.

## **3. Main Purpose and Function**

- 3.1 **Purpose:** It can be used for driving in star pickets, pipe, form work pins for use on fences, barriers and construction.
- 3.2 **Function**
  - 3.2.1 It is a handheld gasoline post driver that is light weight and produces low emissions.
  - 3.2.2 The product is an excellent design and engineered to be easy to use with minimal effort and powerful operating efficiency. The operator can achieve 360° all-round operation.
  - 3.2.3 It can regulate impact energy and impact frequency and be applied to a variety of posts with diameter larger than 20mm (inclusive) and smaller less than 75mm (inclusive).
  - 3.2.4 Advantage: Saves the trouble of using heavy machines such as generator, air compressor, hoses, leads and vehicle.
  - 3.2.5 The operating handle of the machine is rubber and plastic sponge which can greatly reduce the recoil force of the machine. It features a two-way Dampening Spring which makes it more comfortable to use.

## **4. Preparation before Use**

- 4.1 Piling Socket – Remove piling socket retainer ring.
  - 4.1.1 Install or replace Piling Socket Sleeve selecting the correct size for the picket to be driven. Select from the 2 sizes that are supplied with your machine – 20~55mm, 56~75mm.
  - 4.1.2 Tightening the retainer using wrench that comes with the machine tool kit.



- 4.2 **Fuel** – Refer to Honda GX50 User Manual.
- 4.3 **Checking of Air Filter** – Refer to Honda GX50 User Manual.

## **5. Starting**

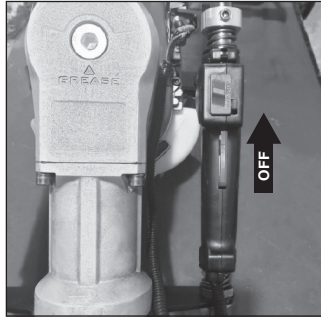
- 5.1 Turn ignition switch to the ON position, prime fuel by depressing the fuel bubble on the carburettor, turn choke to the ON position, pull start.
- 5.2 After engine starts, turn choke to the OFF position.
- 5.3 Please do not pull up the starter handle during operation since fast rotation of the part may lead to damage of the starter.

## **6. Operation**

- 6.1 After the engine is started, allow 5 minutes for the machine to warm up.
- 6.2 When the engine has warmed up, press throttle button to the appropriate position according to the required impact energy.  
Note: Operate the new post driver at low or medium speed in the first 20 hours of operation and the maximum throttle shall not be used in order to extend the service life.
- 6.3 Operating speed of post driver is most effective at medium speed.

## **7. Turning off the Machine**

- 7.1 Release throttle button and allow the machine to idle for 3-5 minutes.
- 7.2 Push ignition switch to the off position.



## **8. Technical Maintenance**

- 8.1 **Engine** – Refer to Honda GX50 User Manual.
- 8.2 **Spark Plug** – Refer to Honda GX50 User Manual.
- 8.3 **Muffler** – Refer to Honda GX50 User Manual.
- 8.4 Check grease every 50 hours of operation.
- 8.5 Do not overfill.
- 8.6 **Impact Cylinder Lubrication** – Service after 200 hours of use.
- 8.6.1 Use only genuine Bullmax Rock Hammer Grease – Call 02-95446700 or your local dealer.

## **9. Failure Analysis and Troubleshooting**

Refer to Honda GX50 User Manual.

**Example:** The machine is working normally but the work efficiency is very low.  
The rubber ring of impact piston is aged and worn → Replace.

**Please contact Bullmax 02-95446700 for maintenance advice and parts.**

## **10. Honda GX50 Engine Specifications**

Refer to Honda GX50 User Manual.

## 11. Bullmax Post Driver Parts – Maintenance Cycle

The following Data is for operating under normal conditions. If operating in the conditions such as thick dust or long work hours, or hot conditions; the maintenance cycle should be shortened correspondingly.		Before work each day	After work or every day	After refilling fuel	Every Week	Every Month	Every 50 hours of operation	If necessary	Every 200 hours
The whole machine	Spanner check (tighten all bolts and screws)	✓		✓					
	Clean		✓						
Control Handle Frame/ Stop button	Function check	✓		✓					
Reduction gear box/ Impact cylinder	Service								✓
Silencer	Check						✓		
	Remove carbon deposit							✓	
Cylinder Cooling Fin	Check						✓		
	Clean							✓	

## 12. Honda GX50 Engine – Maintenance Cycle

Refer to Honda GX50 User Manual.

### 13. Parts List and Exploded View of BMPD – Honda GX50

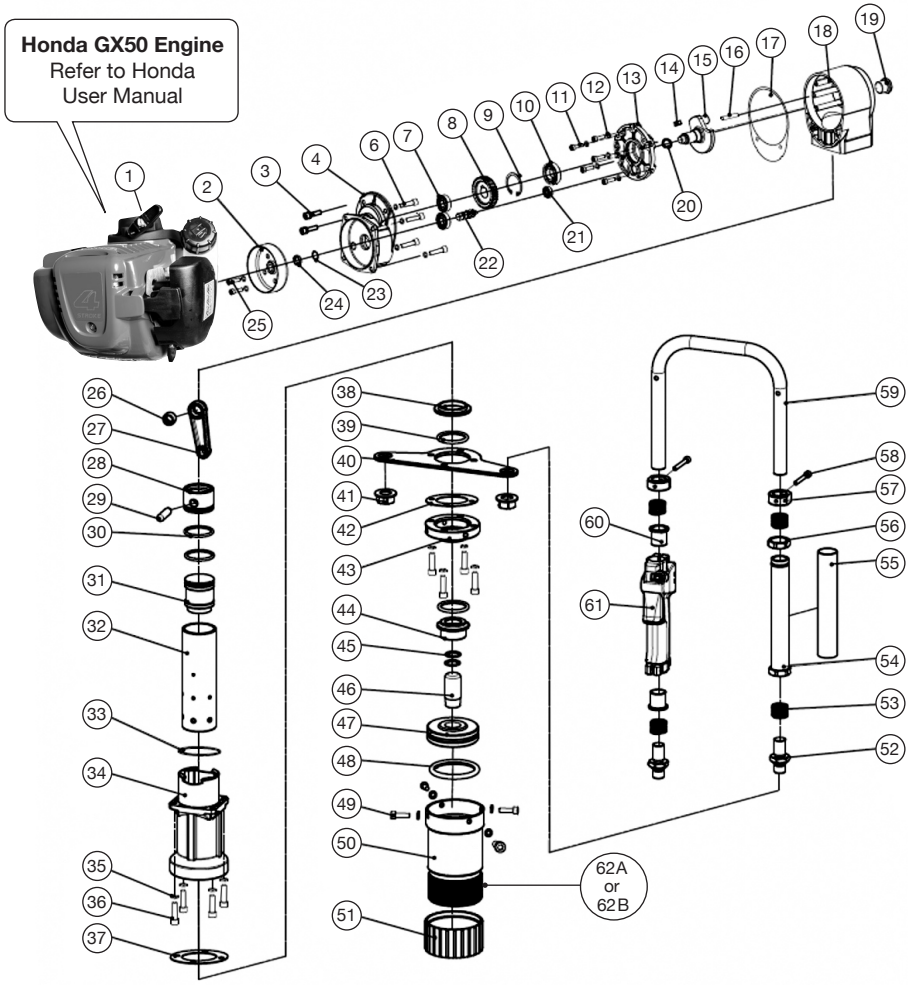
Parts No.	Name	Qty
1	Honda Engine GX50	1
2	Passive Disk	1
3	Hexagon Socket Head Combination Screw M6*25	2
4	Gear Box Cover	1
5	Elastic Washer 6	6
6	Hexagon Socket Head Cap Screw M6*18	4
7	Deep Groove Ball Bearing 6001-2rs	2
8	Big Gear	1
9	Hole Retainer 37	1
10	Deep Groove Ball Bearing 61904-2rs	1
11	Hexagon Socket Head Cap Screw M5*25	5
12	Elastic Washer 5	5
13	Middle Cover	1
14	Flat Key Level A 6*6*14	1
15	Impact Crankshaft	1
16	Cylindrical Pin $\phi$ 5*25	1
17	Gear Box Gasket	1
18	Gear Box	1
19	Nut M20*1.5	1
20	Shaft Ring 17	1
21	Deep Groove Ball Bearing 607-2rs	1

Parts No.	Name	Qty
22	Small Gear	1
23	Copper Gasket 12*16*0.5	1
24	Passive Disk Washer	1
25	Hexagon Socket Head Cap Screw M6*25	2
26	Needle Roller Bearing Nk142212	1
27	Impact Connecting Rod	1
28	Impact Piston	1
29	Impact Piston Pin	1
30	O-Ring 42*4	2
31	Hammer	1
32	Impact Cylinder	1
33	O-Ring 65*2.5	1
34	Front Case	1
35	Elastic Washer 8	12
36	Hexagon Socket Head Cap Screw M8*40	8
37	Lower Paper Pad	1
38	Cylinder Gasket	1
39	O-Ring 43*5	2
40	Support Plate	1
41	Hexagon Flange Nut M18*1.5	2
42	Connecting Body Paper Pad	1
43	Connectome	1



<b>Parts No.</b>	<b>Name</b>	<b>Qty</b>
44	Shock Locating Ring	1
45	O-Ring 26*3	2
46	Shock	1
47	Inner Pile Head	1
48	O-Ring 77*5	1
49	Hexagon Socket Head Cap Screw M8*20	4
50	Piling Socket	1
51	Piling Socket Retainer	1
52	Elbow Joint	2
53	Spring $\phi$ 25*18	4
54	Handle Sleeve	1
55	Handle Soft Sleeve	1
56	Handle Nut	1
57	Position Sleeve	2
58	Hexagon Socket Head Cap Screw M6*35	2
59	Elbow Handle	1
60	Switch Handle Guide Sleeve	2
61	Combination Switch	1
62A	Piling Socket Sleeve – 55mm	1
62B	Piling Socket Sleeve – 75mm	1

# Exploded View of Bullmax Post Driver BMPD-H80 with Honda GX50 Engine



## **14. Bullmax Post Driver Packing List**

1.	Bullmax Post Driver with Honda GX50 engine .....	1
2a.	Piling Socket Sleeve 20-55mm .....	1
2b.	Piling Socket Sleeve 56-75mm .....	1
3.	Bullmax Rock Hammer Grease - 50ml .....	1
4.	Bullmax User Manual .....	1
5.	Bullmax Warranty Card .....	1
6.	Tool Kit (Spark plug spanner, Allen key spanners, 4mm, 5mm, 6mm, T-piece Allen key spanner, straight edge screwdriver, open ended spanners, 8mm & 10mm.) .....	1

## **15. Bullmax Post Driver Warranty**

The Bullmax post driver is assembled in Australia and is inspected and tested before leaving our factory.

The Bullmax post driver has a 3-year Honda engine warranty and a Bullmax 1-year post driver parts warranty. Bullmax undertakes as its option to repair and replace free of charge each product or part thereof on the following conditions.

The warranty is valid from the date of purchase and when the machine is used in accordance with the information supplied in the instruction manual. (Please keep proof of purchase)

### **The Bullmax warranty does not cover the following**

- Normal wear and tear
- Commercial use
- Damaged caused due to failing to follow the safety and operating instructions, which includes due to lack of maintenance, cleaning and care of the post driver.
- Parts that may need to be replaced due to normal wear and tear and lack of maintenance.
- Incorrect usage and negligence which causes damages to the machine.
- Altering or modifying the post driver.
- Use of unsuitable parts used for repairs that were not conducted by an authorised Bullmax repairer.
- Using the post driver in an unsuitable environment and not for the purpose it was intended for.
- Unsuitable transportation of the post driver, involved in an accident or not securely packaged to avoid damage in transit or storage.

### **How to make a claim**

If a fault has occurred within the warranty period the consumer can make a claim, by adhering to the following.

- Stop using the post driver immediately to avoid further damage to the machine.
- Contact Bullmax at [info@bullmax.com.au](mailto:info@bullmax.com.au) or alternatively by returning the post driver to the place of purchase and contact can be made.

Our goods come with guarantees that cannot be excluded under Australian Consumer Law. You are entitled to have the goods repaired, replaced or a refund for a major failure.